



SOUTH LAWTON

TRANSMISSION IMPROVEMENTS PROJECT

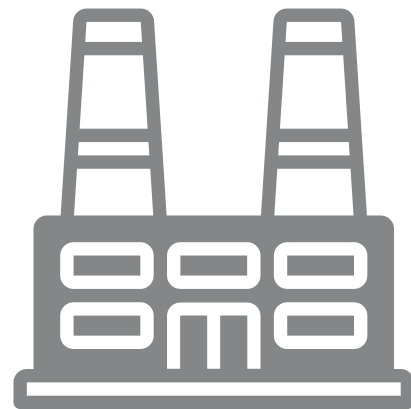
WELCOME TO OUR VIRTUAL OPEN HOUSE

As a result of the COVID-19 pandemic and social distancing recommendations made by the Centers for Disease Control and Prevention (CDC), PSO invites you to attend this virtual open house in order to minimize in-person contact. PSO remains committed to listening to your concerns and answering your questions, but we are also committed to keeping our customers and employees safe and healthy. We welcome your feedback via telephone and email as we strive to make the most informed decisions possible.

HOW THE SYSTEM WORKS

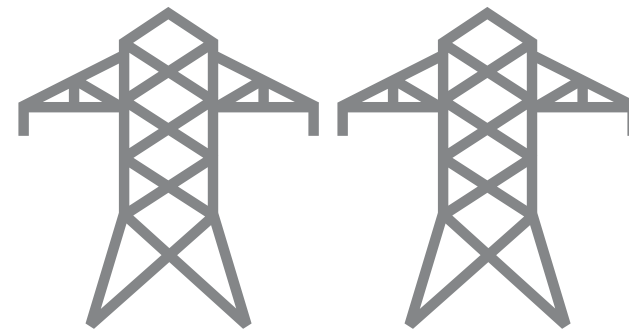
HIGH VOLTAGE

LOCAL TRANSMISSION >>



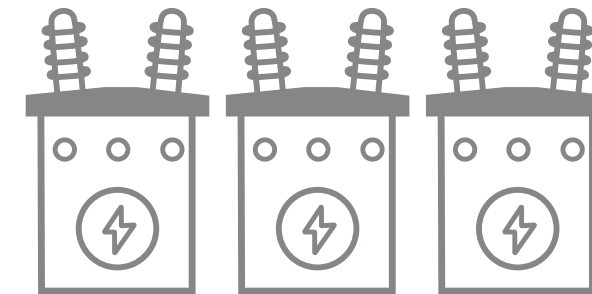
1) GENERATION STATIONS

PSO produces electricity at coal, natural gas, and wind power stations and then transports it long distances over transmission lines.



2) EHV TRANSMISSION

Extra-high Voltage (EHV) electric transmission lines are generally 345-kilovolt (kV) on PSO's system.



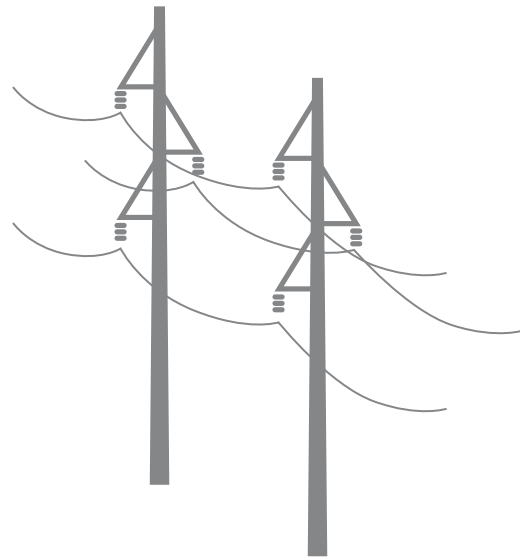
3) SUBSTATIONS

Substations direct the flow of electricity and either decrease or increase voltage levels for transport.

HOW THE SYSTEM WORKS

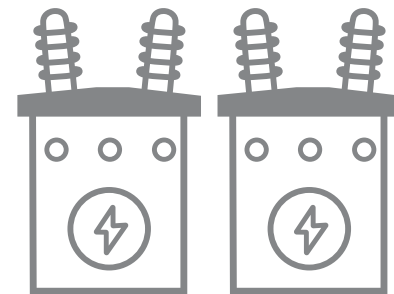
LOCAL TRANSMISSION

DISTRIBUTION >>



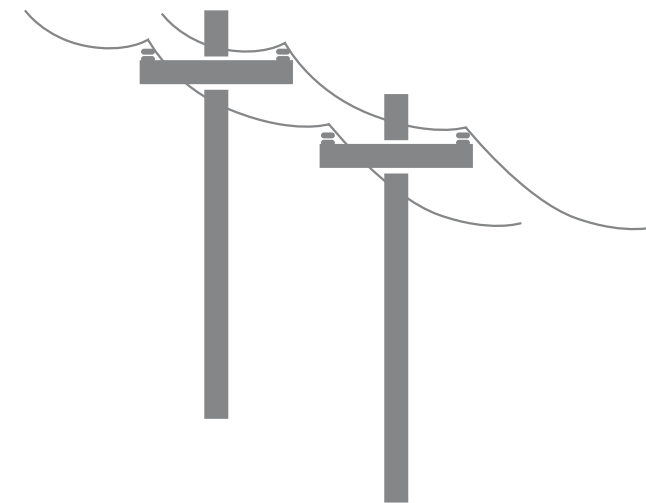
4) LOCAL TRANSMISSION

PSO typically uses 69-kV and 138-kV transmission lines to move power shorter distances - for example, to different parts of a city or county.



5) SUBSTATION

Substations transform 69-kV and 138-kV electricity into lower distribution level voltages such as 34.5 kV, 12 kV, or 7.2 kV.

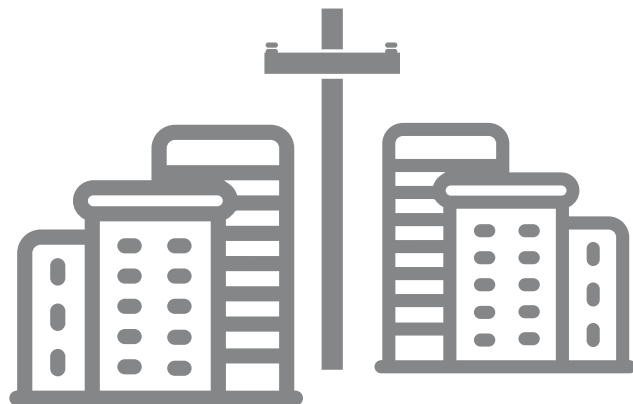


6) PRIMARY DISTRIBUTION

These main lines (also called circuits) connect substations to large parts of the community.

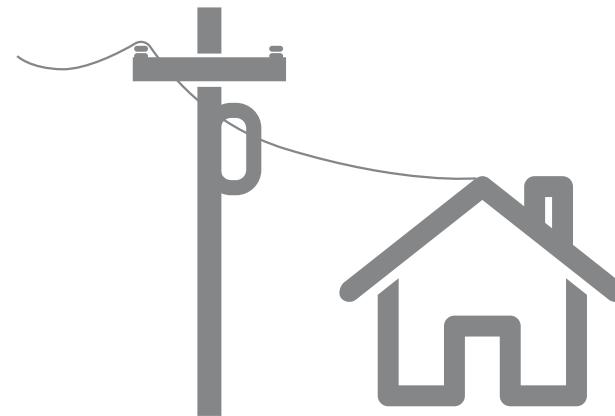
HOW THE SYSTEM WORKS

DISTRIBUTION



7) LATERAL DISTRIBUTION

These smaller capacity lines deliver electricity to neighborhoods and other smaller groups of customers.



8) INDIVIDUAL SERVICE

Smaller transformers step down voltage to levels customers can use -- typically 120 or 240 volts for individual residences.

TO USE AN ANALOGY, ELECTRIC TRANSMISSION IS SIMILAR TO OUR NATIONAL ROAD SYSTEM. THREE KINDS OF POWER LINES EXIST BETWEEN POWER PLANTS AND HOMES AND BUSINESSES:

- Extra-high Voltage (EHV) lines are like electrical interstate highways.
- High-voltage local transmission lines are like four-lane roads.
- Distribution lines are like two-lane roads that eventually connect to your driveway.

PROJECT NEED & BENEFITS

WHY IS THE PROJECT IMPORTANT TO OUR COMMUNITY?

MEETING MODERN STANDARDS

The project upgrades the line to meet modern standards by replacing wooden poles from the 1970s with modern steel poles.

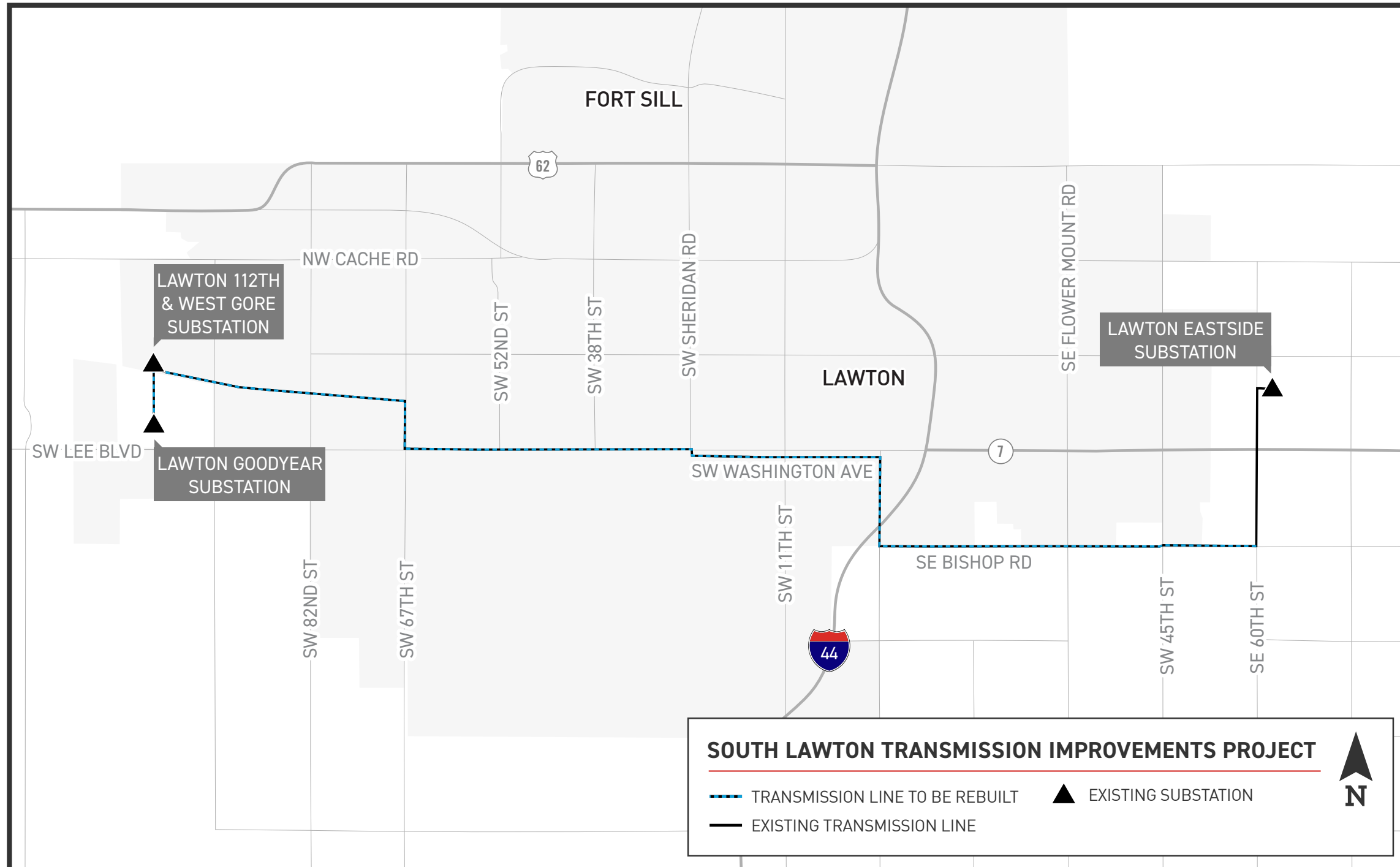
ENHANCING RELIABILITY

The project enhances system reliability by strengthening the line against severe weather impacts and decreasing the likelihood of widespread community power outages.

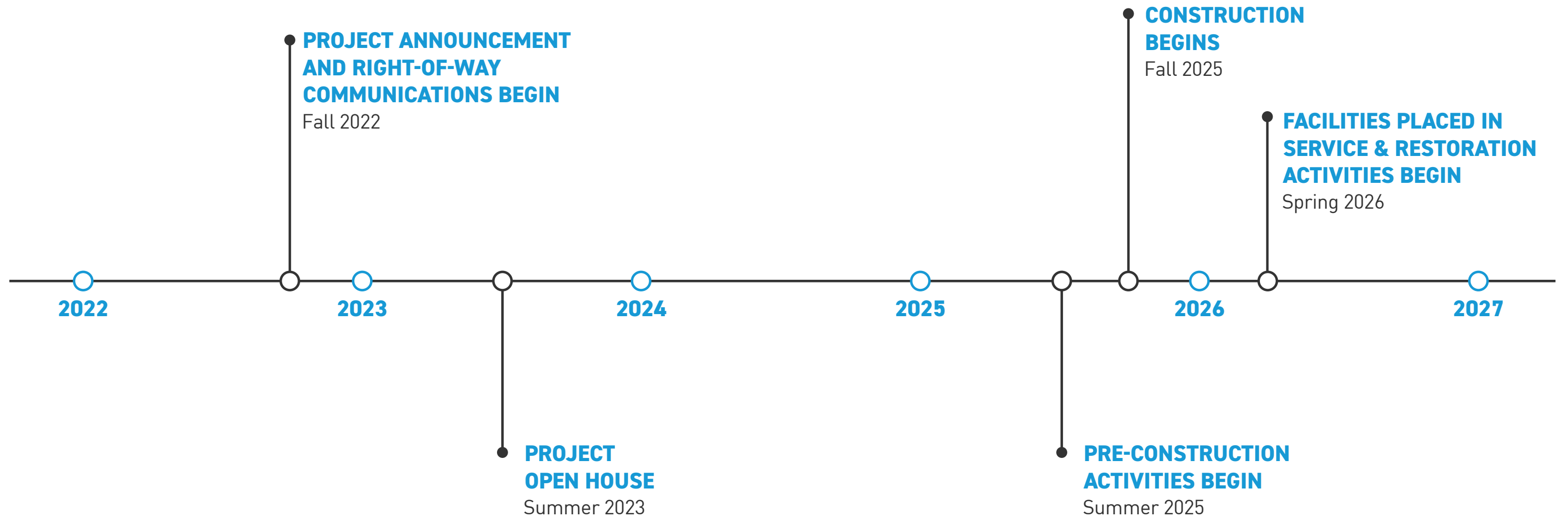
ACCOMMODATING GROWTH

The project supports future economic development and the area's growing electrical load.

PROJECT MAP

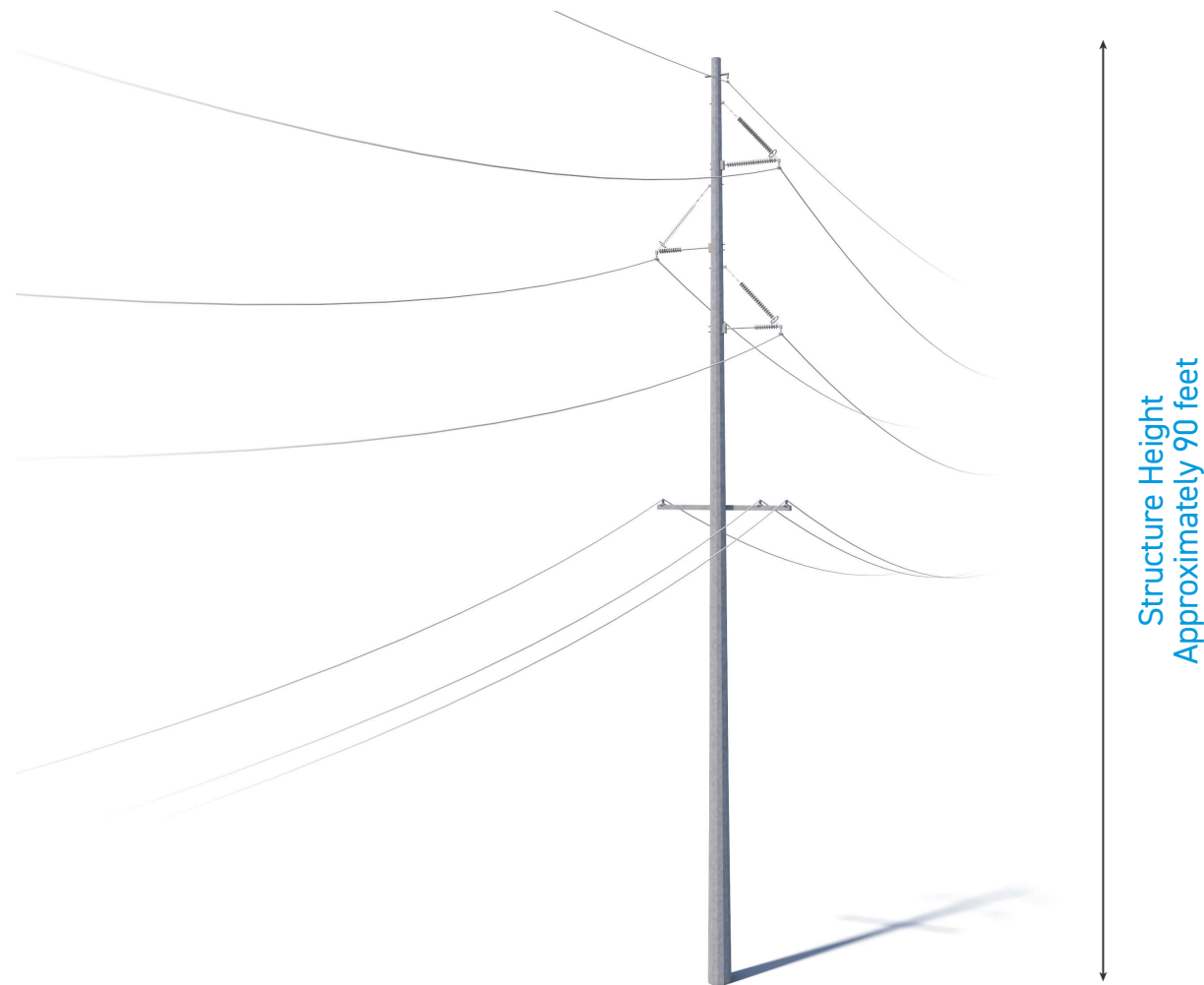


PROJECT SCHEDULE



Timeline subject to change.

TYPICAL STRUCTURES



This project involves the use of single steel poles

Typical Structure Height: **Approximately 90 feet***

Typical Distance Between Structures: **Approximately 500 feet***

*Exact structure design, height and right-of-way requirements may vary.

RIGHT-OF-WAY

PSO HAS TWO KEY PHILOSOPHIES THAT PERTAIN TO POWER LINE RIGHTS-OF-WAY:



1 Routes should cause the least possible disturbance to people and the environment.



2 Property owners should be fairly compensated for any land rights that must be acquired.

RIGHT-OF-WAY

PSO studies the land and, wherever possible, proposes routes that reduce impacts on property owners. PSO reaches out to landowners in the following ways:

TO GAIN RIGHT-OF-ENTRY TO BEGIN:

- Environmental assessments
- Appraisal work
- Land surveying, soil boring and other field activities
- Cultural and historic resource reviews

TO SECURE RIGHT-OF-WAY AND COMMUNICATE:

- Landowner compensation
- Terms and conditions of easement
- Width of the right-of-way

TO OUTLINE PSO'S CONSTRUCTION PROCESS WITH A SPECIFIC FOCUS ON:

- Property restoration
- Damage mitigation as appropriate

CONSTRUCTION FAQ

PROJECT COMPONENTS & BENEFITS

The project involves rebuilding about 13 miles of 138-kilovolt (kV) power line between the Lawton Eastside Substation in east Lawton and the Lawton 112th & West Gore Substation in west Lawton. The project also includes rebuilding a half-mile of power line between the Lawton 112th & West Gore and Lawton Goodyear substations and upgrading equipment at those stations.

The project upgrades the line to meet current standards by replacing deteriorating wooden poles from the 1970s with modern steel poles. This strengthens the line against severe weather impacts and reduces the likelihood of large, community-wide power outages.

TRAFFIC CONTROL

PSO representatives work to ensure public safety and minimize inconveniences during construction. Crews plan to:

- Close road lanes as needed
- Use flaggers and signs to aid traffic flow on city streets during the day
- Open road lanes at night if safety allows

DAILY CONSTRUCTION SCHEDULE

Construction typically takes place Monday - Sunday during daytime hours (7 a.m. - 7 p.m.), weather permitting.

PUBLIC SAFETY TIPS

- Keep your distance from construction workers and equipment
- Stay outside of temporary safety barriers
- Be aware of uneven or slippery surfaces
- Slow down when driving in the area and make sure your headlights are on
- Watch for posted signs
- Watch for road closures and traffic detours
- Follow flaggers' instructions

WHAT TO EXPECT DURING CONSTRUCTION

CONSTRUCTION SITE PREPARATION: Summer 2025 - Fall 2025

Crews mark utilities and pole locations along the power line route. Crews may remove fences, woody-stemmed vegetation and other obstructions from the right-of-way area where necessary.

Crews also:

- Install fences around the construction area for the public's safety
- Remove parts of sidewalks at various pole locations
- Remove soil to make room for the larger bases of the new poles

CONSTRUCTION ACTIVITY: Fall 2025 - Spring 2026

Crews place pole sections along the right-of-way corridor prior to pole installation.

At most pole locations, crews:

- Assemble the pole and place it near the installation area
- Install and stabilize the base of the pole
- Install and secure the pole
- Install wires on the poles along the power line route
- Remove existing structures and wires

FACILITIES PLACED IN SERVICE: Spring 2026

Crews place the facilities in service after finishing pole and wire installations.

POST-CONSTRUCTION AND SITE RESTORATION: Spring 2026 - Summer 2026

PSO crews follow construction crews throughout the project to restore sidewalks and other neighborhood properties to as close to their pre-construction condition as possible. Right-of-way agents also work with landowners to address any other property damages.

*Schedule subject to change based on weather or other factors.

VEGETATION MANAGEMENT



THE GOALS OF PSO'S VEGETATION MANAGEMENT PROGRAM ARE TO:

- Protect our system and minimize outages
- Minimize any adverse environmental impacts
- Ensure compliance with all applicable laws and regulations
- Perform our work as safely as possible
- Maintain a positive relationship with land owners and the public

WHAT IS VEGETATION MANAGEMENT?

The practice of controlling the growth of trees and other woody stemmed vegetation in line corridors and around substations, while maintaining respect for the environment.

WHY IS IT DONE?



To minimize power outages caused by trees and other plants coming into contact with power lines.



SOUTH LAWTON

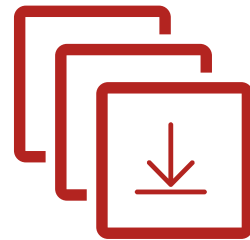
TRANSMISSION IMPROVEMENTS PROJECT

THANK YOU!

Thank you for visiting the project virtual open house. For more information and project updates please visit the project website, or contact us with any additional questions.



**REPLAY
OPEN HOUSE**



**DOWNLOAD
SLIDE DECK**



CONTACT US



**VISIT PROJECT
WEBSITE**